



# KATANA™ Zirconia Block

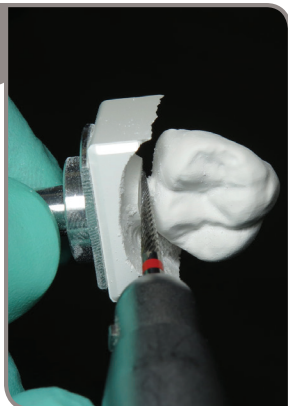
## Pre-Sinter Polishing Guide

MULTI  
LAYERED

By Greg Campbell DDS  
Certified Advanced and Basic CEREC® Trainer

### Pre-Sintering:

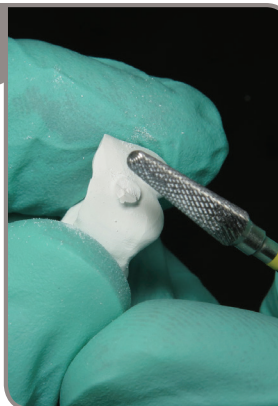
1



Remove restoration from block. **Do Not Cut Through It or Push Into Restoration!**  
Scribe Around Each Side Until Restoration Drops Out (Onto a soft surface)

Meisinger Item Number:  
#HM-23FX-023

2



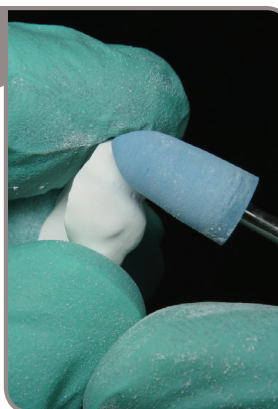
**Smooth The Sprue:**  
Run at 6,500 RPM, Use Light pressure  
Meisinger Item Number:  
HM79EX-023-HP

3



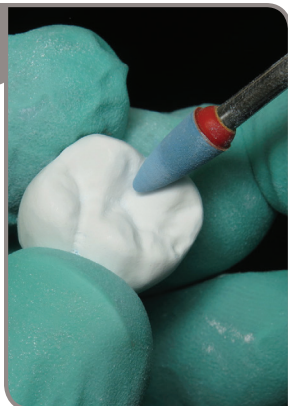
**Optional Step:**  
Add Anatomy to Occlusal Surface  
Meisinger Item Number :  
890C-010-FG Plus adapter

4



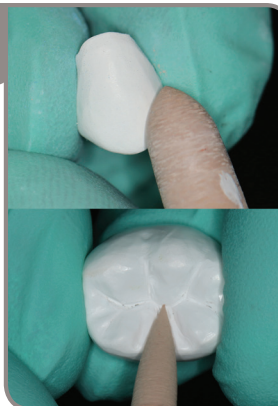
**Initial Smoothing of Surfaces from Milling Groves and Imperfections:**  
Run at 4,500 RPM, Light Pressure  
Meisinger Item Number:  
DCA02-073-HP

5



**Use Smaller Point Same Grit to Smooth Occlusal Anatomy**  
Run at 4500 RPM, light pressure  
Meisinger Item Number:  
DCA04-040-HP

6

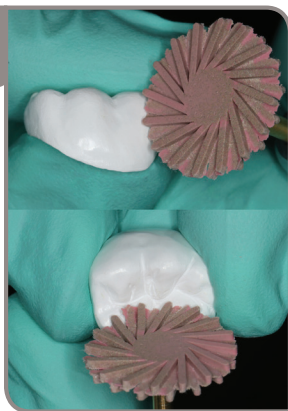


**Use Finer Grit Polisher to Continue To Smooth Surface:**  
Meisinger Item Number:  
DCA08-073-HP

Run Polisher at 4,500 RPM  
Light Pressure  
Meisinger Item Number:  
DCA10-040-HP

## Pre-Sintering (continued):

7



**Smooth Surfaces With Twist Polisher:**  
Meisinger Twist Polisher at 4,000 RPM

- Light pressure

*Item Number:*  
9769M-170-HP

8



**Use Fine Twist Instrument To Achieve High Polish**

Meisinger Fine Twist Polisher at 4,000 RPM

- Light Pressure

*Item Number:*  
9769F-170-HP

9



**Use Cotton Buffing Wheel to Complete High Shine on All Surfaces**

Use at 4,000 RPM

- Light Pressure

*Item Number:* 150-220-HP

10



**Use Brush to Remove all Dust Particles Prior to Sintering**

Brush Intaglio & External Surfaces of Restorations Thoroughly

## Sintering:

Place Restoration Occlusal Surface Side Down In The Speedfire. Margin's facing up.

For Anterior Restorations, Place Lingual Surface Down.



**Dr. Greg Campbell** - [Greg@drgregcampbell.com](mailto:Greg@drgregcampbell.com)

Dr. Greg Campbell maintains a private, CEREC® Based practice in Long Beach, CA and has been a Certified CEREC® Advanced and Basic Trainer since 2008. Dr. Campbell speaks nationally and internationally on digital restorative dentistry and integration of technology into dental practices.