

CEREC® + KATANAM™ ZIRCONIA CASE STUDY SPOTLIGHT
**3-UNIT ANTERIOR MAXILLARY BRIDGE & SINGLE CROWN
 FEATURING KATANAM™ ZIRCONIA BLOCKS***

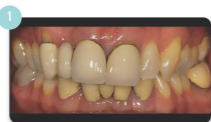


DR. KRISTINE AADLAND
 Vancouver, WA

PATIENT PRESENTATION AND TREATMENT PLAN

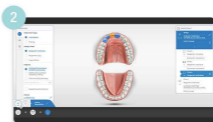
An adult female patient presented with an existing PFM bridge from tooth #6 through #8, and a single-unit PFM on #9 with recurrent decay and a canted smile. The esthetics were no longer acceptable with the metal margins showing, and the porcelain no longer matched her other teeth. Tooth #8 had an existing root canal and post evident on the radiograph. The bridge and crown were over 20 years old. Teeth #s 10 and 11 had no existing restorations and the patient did not want to do veneers or crowns to match teeth #s 6 through 9 but instead wanted natural looking restorations that blended in with her smile.

CASE STUDY



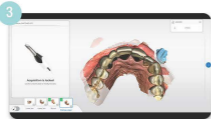
1 PREPARATION

The patient's old PFM bridge (shown here) was removed, and the existing preps for teeth #6 and #8 were modified with a medium chamfer with smooth and rounded edges to accommodate a 3-unit KATANAM™ Zirconia bridge*. There was no abutment for tooth #7, as that space serves as the pontic. Tooth #9 was similarly prepped to receive a single-unit KATANAM™ crown.



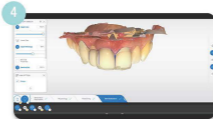
2 DEFINE RESTORATIONS

To begin, each restoration type is defined in the CEREC® Software, as well as the design mode (Biogeneric Individual), material type (KATANAM™ Zirconia block), and milling device (CEREC® MC XL).



3 DIGITAL IMPRESSION

A digital impression of the upper arch was performed using CEREC® Primescan.



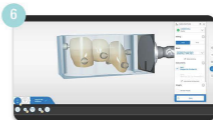
4 RESTORATION DESIGN: BUCCAL

The patient did not like the size of her centrals and wanted them smaller. She also didn't like that her smile was slanted/canted. While designing, it really helps to use the patient's old smile as a reference. That's why, for this case, I used BioIndividual when designing the restorations, and added a BioCopy folder in the acquisition screen. This way, I can ghost over the previous smile and readily see where I'm at.



5 RESTORATION DESIGN: OCCLUSAL

The BioCopy design function is also utilized to ensure a correct occlusal profile.



6 MILLING

A KATANAM™ Zirconia STML 14Z L bridge block was used for the 3-unit bridge*, and a KATANAM™ Zirconia 12Z single-unit block was used for the single crown. The bridge block mills out in about 18 minutes, which is the fastest-milled chairside bridge block currently available.



7 CHARACTERIZATION & FIRING

The Kuraray CERABIEN™ ZR Stain and Glaze Kit was used for characterizing. The colors are very natural and it is not simply a metal oxide like other stains, but actually adding porcelain, giving the restorations more vitality. The oven cycle is quick at approximately 10 minutes, which means multiple fires are easy to do without excess time.



8 SEATING & FINAL SMILE

PANAVIA™ SA Cement Universal and CLEARFIL™ Universal Bond Quick were used for cementation and bonding. I love the ease of use and clean-up with PANAVIA™, and its MDP monomer creates a strong chemical bond to the tooth structure and zirconia. CLEARFIL™ releases fluoride, bonds to zirconia, contains silane, and has a low film thickness. I simply scrub the CLEARFIL™ into the tooth, air dry, and light cure. The patient was very happy with the results. She loved that she no longer saw metal margins, and her smile was much more uniform and lifelike.

*Kuraray/Noritake recommends 2-3 units per KATANAM™ Zirconia 14Z L.

FOR MORE INFORMATION ABOUT THE KURARAY PRODUCTS
 FEATURED IN THIS CASE STUDY, VISIT US AT:
KURARAYDENTAL.COM

TO SIGN UP FOR KURARAY PRODUCT NEWS AND ANNOUNCEMENTS,
 OR TO CONTACT US WITH GENERAL QUESTIONS,
 CLICK HERE: [CONTACT US](#)



Toll Free: 1-800-879-1676
 Fax: 1-888-700-5200

Kuraray America, Inc.
 Dental Division
 32 Old Slip Floor 7
 New York, NY 10005

Copyright ©2020 Kuraray America, Inc.
[Terms of Use](#) | [Privacy Policy](#) | [Contact Us](#)